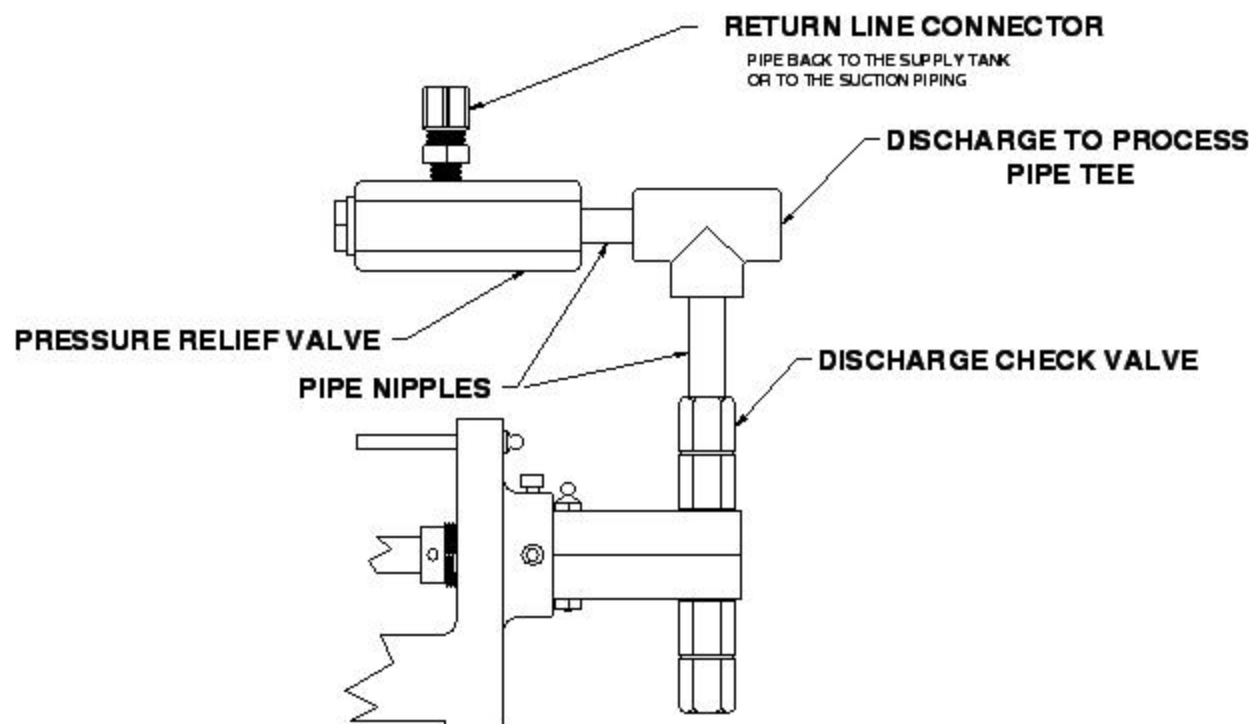


# TYPICAL INSTALLATION OF THE PRESSURE RELIEF VALVE



EACH PUMP IS SUPPLIED WITH A PRESSURE RELIEF VALVE FOR EACH HEAD ON THE PUMP. THE PRESSURE RELIEF VALVE IS A SAFETY DEVICE AND MUST BE INSTALLED IN THE DISCHARGE LINE OFF THE PUMP AS CLOSE TO THE DISCHARGE CHECK VALVE AS POSSIBLE. SET THE PRESSURE RELIEF VALVE AT A VALUE TO INSURE PROTECTION TO THE OPERATOR AND THE EQUIPMENT IN CASE OF A BLOCKAGE DOWN STREAM OF THE PUMP. FAILURE TO INSTALL OR PROPERLY ADJUST THE PRESSURE RELIEF VALVE COULD RESULT IN DAMAGE TO THE EQUIPMENT OR INJURY TO THE OPERATOR.

## #18 PRV

NOTE: TO FIELD ADJUST THE POP OFF PRESSURE, REMOVE THE CAP AND TURN SET SCREW CLOCKWISE TO INCREASE AND COUNTER CLOCKWISE TO DECREASE THE SET POINT.

